

## Revolutionizing Orthodontic Treatment



### Why Choose LuxCreo's 4D Aligner™?



#### Immediate Treatment

- Start same-day aligners.
- Deliver higher patient satisfaction and conversion rates.



#### Better Results

- Superior treatment predictability with ActiveMemory™ Polymer (AMP) and fewer refinement.



#### Less Chair Time

- Fewer attachment requirements and faster workflows.



#### Treat More Patients

- Lower cost compared to comprehensive aligner treatments, making it accessible for more patients.

### Key Features

#### ActiveMemory™ Polymer (AMP)

##### Fewer Refinements

##### Shape Memory + Force Recovery

- Class of shape memory that has full force recovery.
- Restores shape and force for efficient and precise movements.



Before Recovery



Soak in hot water for 10 minutes

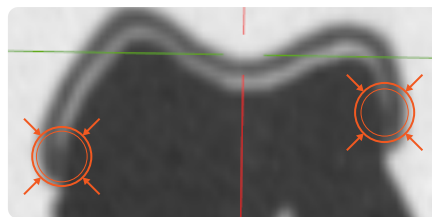


After Recovery

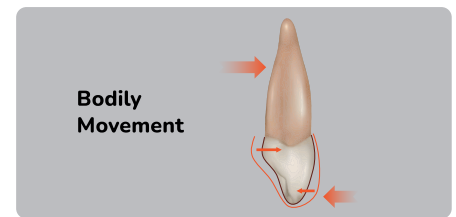
#### No/Fewer Attachments

##### Better Root Control and Tooth Bodily Movement

- Customize thickness per tooth.
- Advanced undercut adaptability for a snug fit.



CT Scan of 4D Aligner on Tooth Model



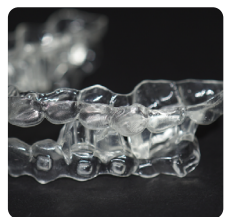
Bodily Movement

Multi-thickness Control

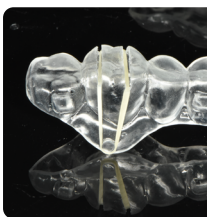
#### Unique Designs Unlocked

##### Clear Aligner Indications Expanded

- Unique features only possible through direct printing.



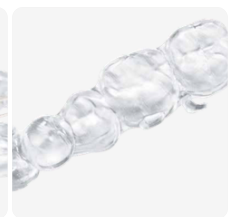
Solid Twin-block



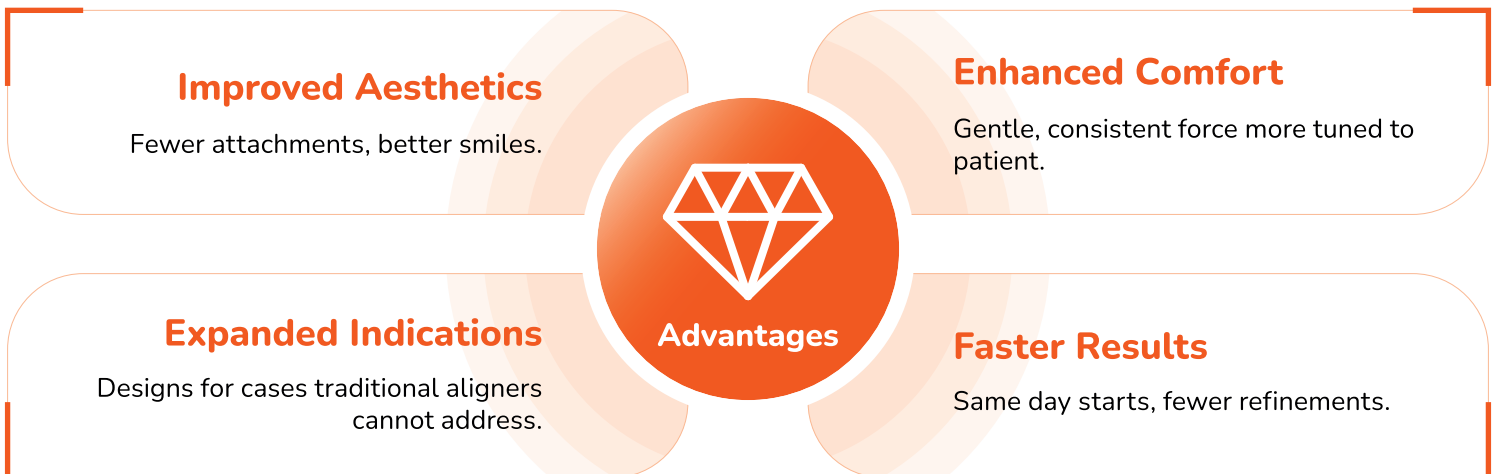
Intrusion Elastic Device



Direct Print Hook



## Advantages Over Traditional Aligners



## Price List for Clinics

Product	Patient	Arch	Original Price	Free Refinement	Treatment Duration	Step	Extra Refinement Price
4DUnlimited5	/	/	\$2,299	Unlimited	5 years	Unlimited	/
4DUnlimited3	/	/	\$1,999	3 in 3 years	3 years	Unlimited	\$230
4D20S	/	Dual	\$1,250	1 in 1 year	2 years	20	\$199
	/	Single	\$937				
4D10S	/	Dual	\$937	No	1 year	10	\$199
	/	Single	\$702				
4DAI (treatment only)	/	Dual	\$99	No	1 year	4	\$199 (service)
	/	Single	\$74				
First Phase1	Child	Dual	\$1,200	Unlimited	18 months	Unlimited	/
	Child	Single	\$830				
First Phase2	Child	/	\$1,499	Unlimited in 3 years	5 years	Unlimited	\$230



**40% off**

if clinic prints trays 1-4 and extra refinements in-house!



Save the Planet,  
Less Intermediate  
**Models!**



**For more information  
Contact:**



+1 (650) 336-0888



[www.LuxCreo.com](http://www.LuxCreo.com)



[info@luxcreo.com](mailto:info@luxcreo.com)



350 W. Ontario Street, Suite 700,  
Chicago, IL 60654

