

Surgical Guide

Dental Surgical Guide for High-Precision, High-Accuracy

Designed for the fast, highly accurate production of surgical guides. Possessing industry-leading flexural stiffness and strength, DSG is ideal for precise orthodontic work that requires tailored angle and depth.



Strong



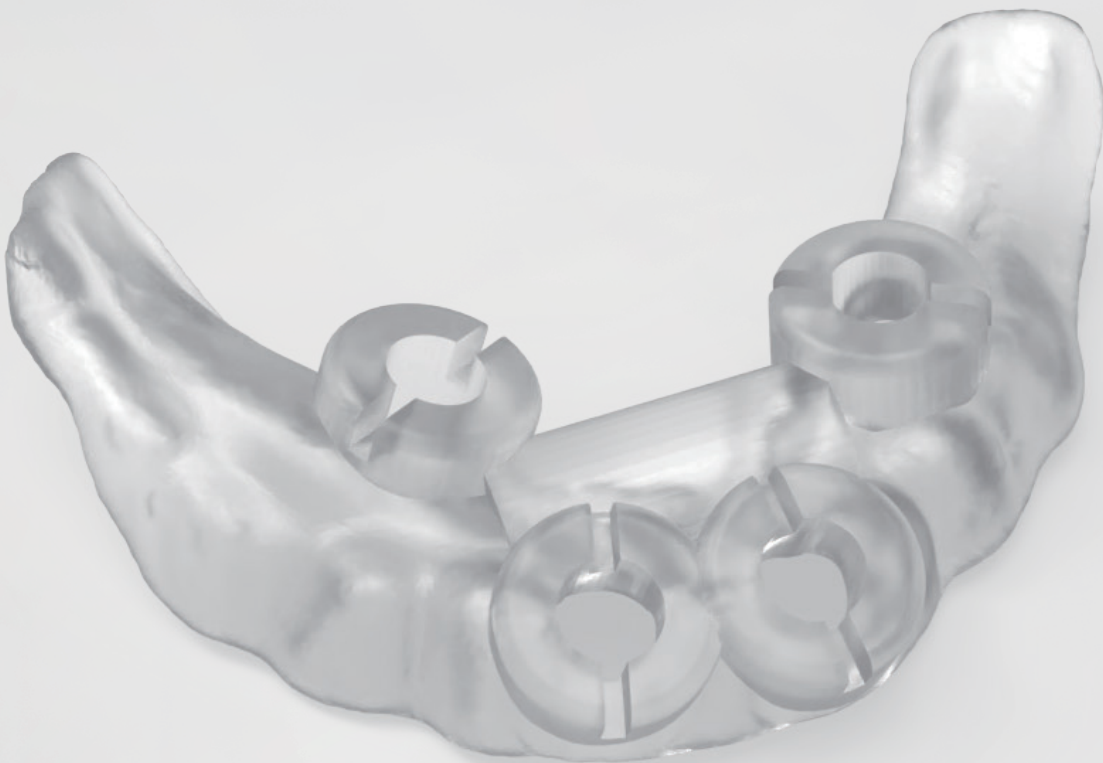
Transparent



Accurate



Low Shrinkage



DSG

DSG

Dental Surgical Guide 1-LCD

Luxcreo’s Dental Material DSG is a light-curing resin for the 3D printing of orthodontic surgical guides for use with LCD printers.

Composition: methacrylate, photo-initiator, inhibitor, and pigment

Tensile Properties, ASTM D638		Metric	U.S.
Tensile Modulus		2950 MPa	427.8 ksi
Ultimate Tensile Strength		70 MPa	10.2 ksi
Elongation at Break		4.1 %	4.1 %
Impact Properties, ASTM D256		Metric	U.S.
Notched Izod (Machined), 23°C		19.4 J/m	0.364 ft-lbf/in
Flexural Properties, ASTM D790		Metric	U.S.
Flexural Strength		125 MPa	18.1 ksi
Flexural Modulus		3500 MPa	507.5 ksi
Thermal Properties, ASTM D648		Metric	U.S.
Heat Deflection Temperature @0.455 MPa/66 psi		81.5 °C	178.7 °F
General Properties		Metric	
Shore Hardness, ASTM D2240		85D	
Density, ASTM D792		1.1191 g/cm³	

These data were determined in accordance with ISO and ASTM standards and are pursuant to LuxCreo Quality System. This document is valid without signature.

These data are typical values and were determined through testing on DLP printers which are validated for use with LuxCreo’s products. Mechanical properties will vary based on machine, part orientation, machine type, machine power, post curing of the printed parts, and cleaning. See product guide for post-processing procedure and best practices. Improper use or failure to adhere to the product guide may result in variations of color and mechanical properties. This product is suitable for the manufacturing of surgical guide, including tissue-supported guides, bone-supported guides, bone reduction guides, and CLP guides. LuxCreo reserves the right to change material characteristics, and formulation without prior notification.