



RE 11

Prototyping Material


LuxCreo’s rapid engineering prototyping material, designed for speed and accurate printing.
Evaluate design aesthetics and confirm assembly fit before taking your part to production.
Low water absorption after curing.



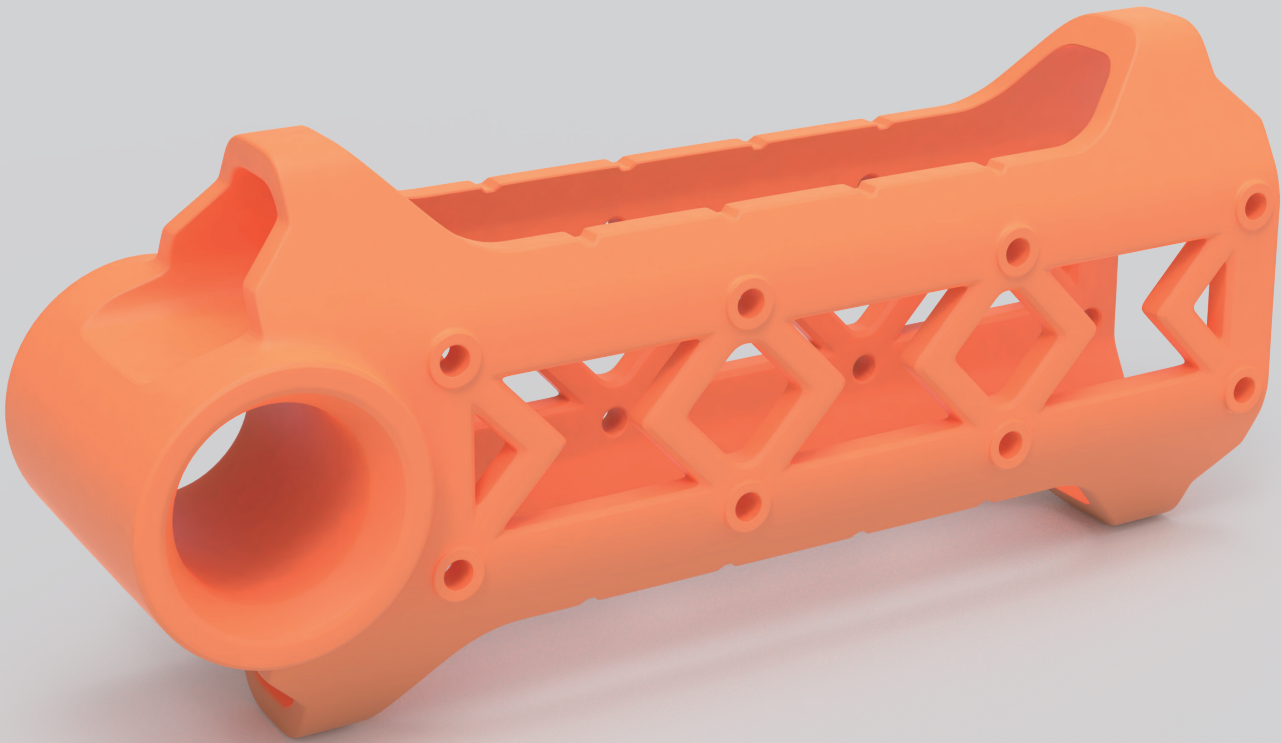
Fast



Accurate



Rigid



■ Mechanical Properties :

Tensile Properties, ASTM D638	Metric	U.S.
Tensile Modulus	2388 MPa	346.30 ksi
Ultimate Tensile Strength	55.96 MPa	8.12 ksi
Elongation at Break	3.65 %	3.65 %
Impact Properties	Metric	U.S.
Notched Izod (Machined), 23 °C , ASTM D256	16.54 J/m	0.31 ft-lbf/in
Flexural Properties, ASTM D790	Metric	
Flexural Strength	118.1 MPa	17.13 ksi
Flexural Modulus	3141 MPa	455.58 ksi
General Properties	Metric	
Shore Hardness, ASTM D2240	80D	
Density (UV cured), ASTM D792	1.20 g/cm ³	

These data are typical values and were determined through testing on printers which are validated for use with Luxcreo's products. Mechanical properties will vary based on machine, part orientation, machine type, machine power, post curing of the printed parts, and cleaning. See product guide for post-processing procedure and best practices. Improper use or failure to adhere to the product guide may result in variations of color and mechanical properties. Luxcreo reserves the right to change material characteristics, and formulation without prior notification.